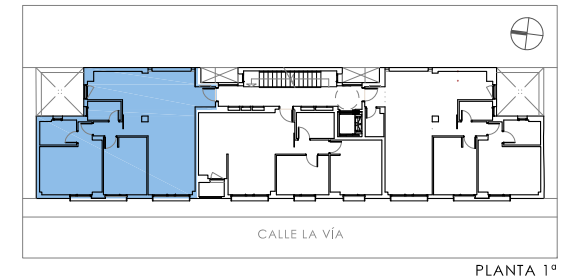
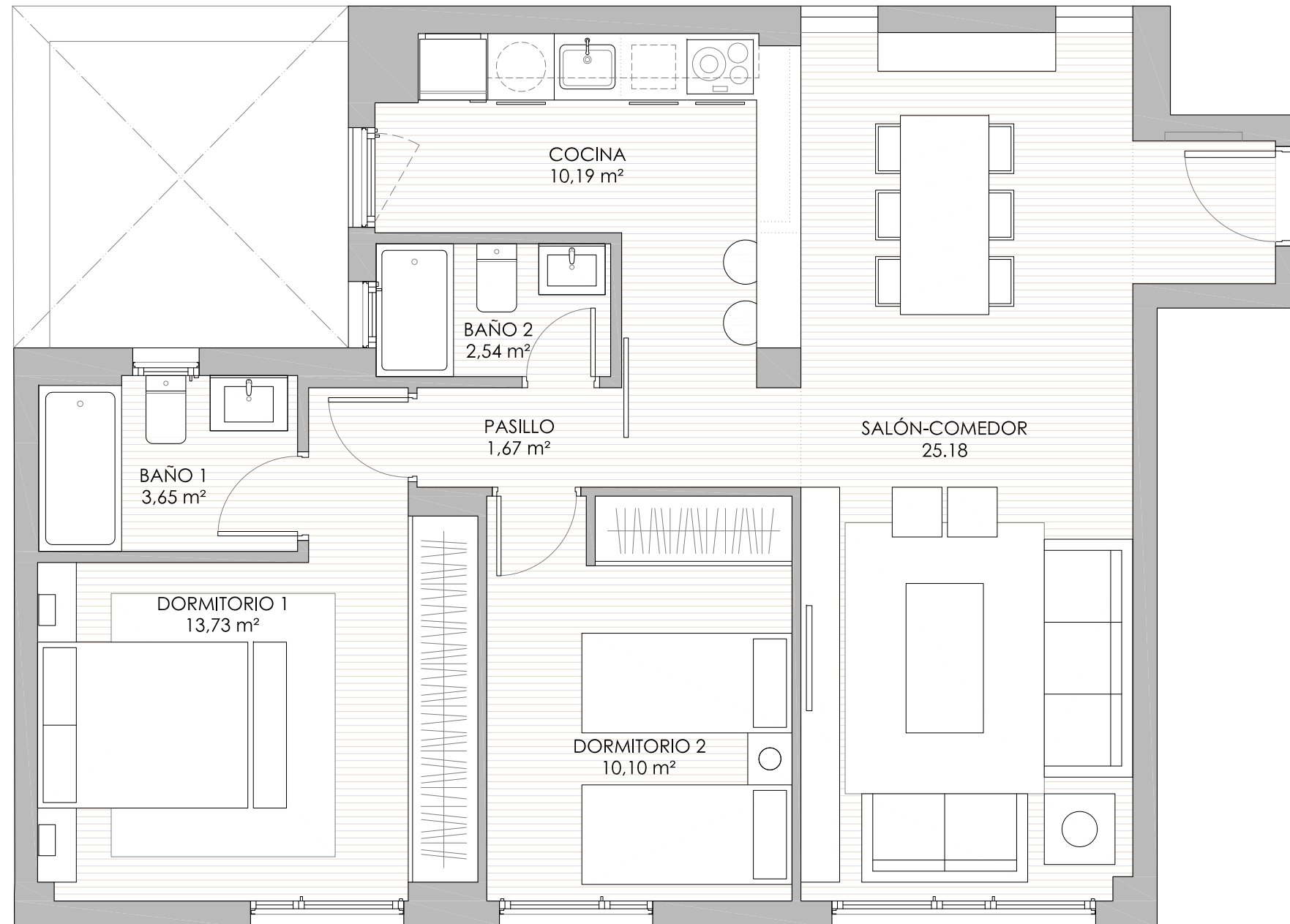


CASABLANCA
Residencial

C/ La Vía, nº 12



e 1/50 1 2 3 4 5 6 7



VIVIENDA A

SUPERFICIES ÚTILES (m²)

SALÓN-COMEDOR	25.18
COCINA	10.19
PASILLO	1.67
BAÑO 1	3.65
BAÑO 2	2.54
DORMITORIO 1	13.73
DORMITORIO 2	10.10
TOTAL SUP.ÚTIL CERRADA	67.06
TOTAL SUP.CONST. CERRADA	77.88

